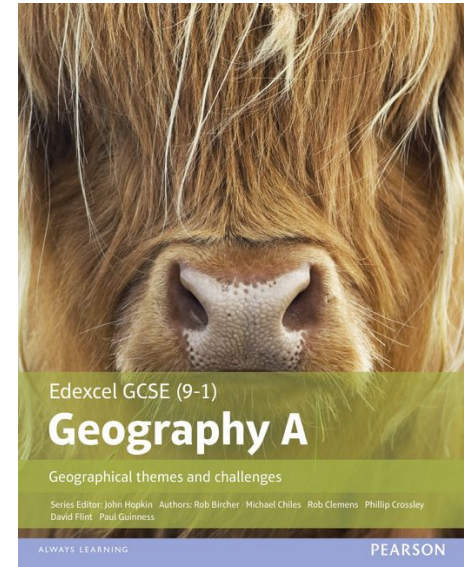


JOHN F KENNEDY
CATHOLIC SCHOOL
INSPIRE • ACHIEVE • SERVE



Year 11 Raising Achievement

Geography

Specification & Examination

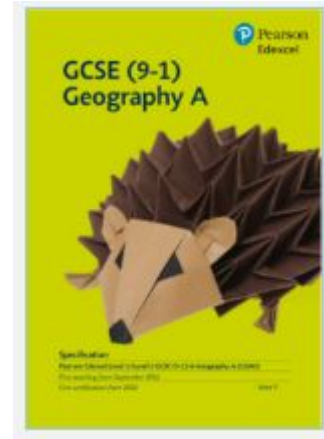


JOHN F KENNEDY
CATHOLIC SCHOOL

At JFK we follow the pearson **edexcel geography A course**. The specification website contains a good range of resources to help your study. On it you will find the specification itself which doubles as a brilliant revision list, the full range of past papers and mark schemes as well as study guides and key word lists.

<https://qualifications.pearson.com/en/qualifications/edexcel-gcses/geography-a-2016.html>

Examination: You have 3 exams at the end of year 11. Paper 1 covers the physical topics, paper 2 the human ones and paper 3 combines fieldwork and challenges facing the UK.



Revision



JOHN F KENNEDY
CATHOLIC SCHOOL

The approach you take to revision will be personal to you. A number of resources are available to support.

The **best revision guide** is the one available from student services. This comes as a revision pack including 2 guides and a workbook.

Seneca learning is a brilliant **online resource** for geography revision, you will be set activities on this in class but can use it independently as well.

[Senecalearning.com](https://www.senecalearning.com)

Assessment objectives



JOHN F KENNEDY
CATHOLIC SCHOOL

AO1: Demonstrate knowledge of locations, places, processes, environments and different scales (15%).

AO2: Demonstrate geographic understanding of: concepts and how they are used in relation to places, environments and processes; the interrelationships between places, environments and processes (25%).

AO3: Apply knowledge and understanding to interpret, analyse and evaluate geographical information and issues to make judgements (35%, including 10% applied to fieldwork context(s))

AO4: Select, adapt and use a variety of skills and techniques to investigate questions and issues and communicate findings (25%, including 5% used to respond to fieldwork data and context(s)).

Geography drop-ins



JOHN F KENNEDY
CATHOLIC SCHOOL

- Attempted some additional exam questions or past papers?
- Need to ask a question related to something covered in class?
- Would like some extra help with revision?

Pop into geography at any lunchtime for help.

Mr Cato (B17) - Miss O'Connor (B18) - Miss Quarman (B16)

Exam papers



JOHN F KENNEDY
CATHOLIC SCHOOL

Each exam paper in geography covers 3 topic areas. The exam questions in each build in difficulty as you move through the topic.

1 UK landscapes are made up of different rock types.

(a) (i) Identify **one** example of an igneous rock.

- A chalk
- B granite
- C sandstone
- D schist

(1)

(ii) State **one** characteristic of igneous rocks.

(1)

(c) The velocity of a river changes with distance downstream.

Explain **one** reason why river velocity usually increases with distance downstream.

(2)

In this question, up to four additional marks will be awarded for your spelling, punctuation, grammar and use of specialist terminology.

(f) Assess the role of biotic and abiotic characteristics in the functioning of tropical rainforests.

(8)

Skills



JOHN F KENNEDY
CATHOLIC SCHOOL

1. Graphical Skills

Line & Bar Graphs (Simple, Comparative, Divided, Divergent), Pie Diagrams, Located Diagrams, Scatter Graphs

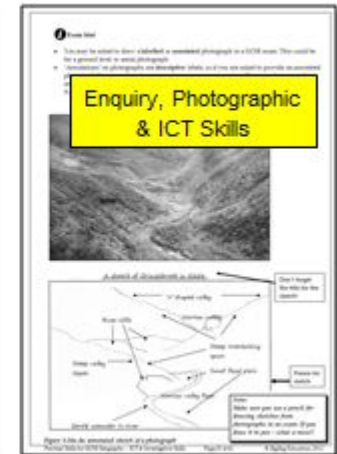
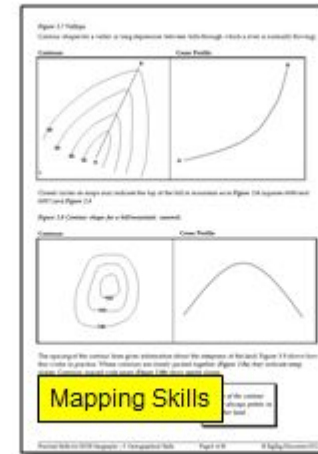
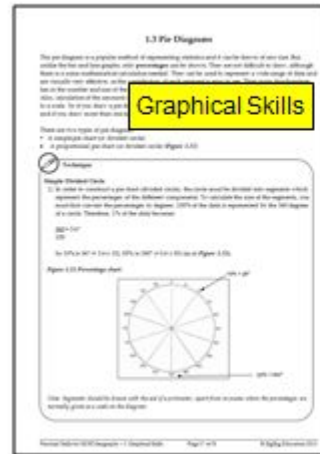
2. Mapping Skills

OS Maps, Scales, Grid References, Contour Lines, Distances & Directions, Valley Cross Sections, River Cross Profiles, Long Profile of a River, Flow & Discharge Lines, Choropleth Maps, Isoline Maps

3. Enquiry, Photographic and ICT Skills

Investigation, Methodology, Data Collection (Primary & Secondary), Mean, Median, Dispersion, Interquartile Range, Mode, Aerial & Ground-Level Photographs, Sketches from Photos / in the Field, Satellite Photographs, GIS

You will continue to develop broad geographical skills during the GCSE course.

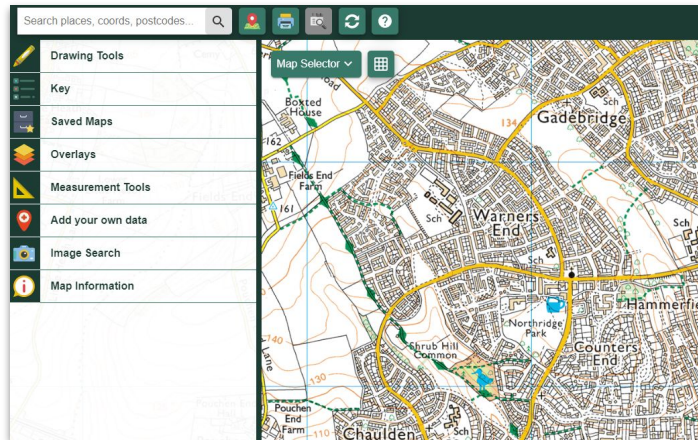


Digi maps



JOHN F KENNEDY
CATHOLIC SCHOOL

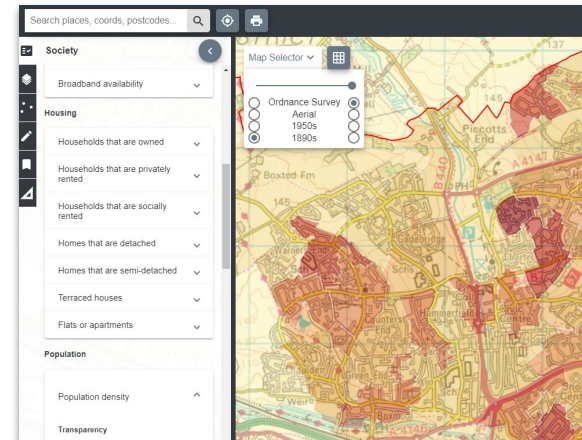
Being able to use and understand geographical information systems (GIS) is an important part of your skills development. We use the digimap and data nation websites to help understand places and the lives of the people who live there. Log on and have a play!



DigiMaps
<https://digimapfor.schools.edina.ac.uk/>

Login = HP12PH

P/W = pluins7810



Data Nation
<https://datanation.edina.ac.uk/>

Login = HP12PH

P/W = cleeps4634